



PRIMAVERA

# Office Extensions

## For a Total Business Insight



# PRIMAVERA Office Extensions

## Solution overview

Based on the potential of the world-famous tool, Microsoft Excel, PRIMAVERA developed a solution that allows Managers to obtain a complete assessment of the organization's performance.

With features such as: **reporting capability; possibility of extraction and analysis of all the ERP information; permanently updated data and availability of innumerable reports that support Management**, PRIMAVERA Office Extensions is a powerful tool developed in order to allow the handling and analysis of data, making it possible to consult and compare business information extracted from the PRIMAVERA ERP.

Offering a set of management reports, it is seen as an instrument fundamental to the reporting activity of large and medium-sized organizations, promoting a real-time multi-company overview.

Based on Excel's vast potential, this solution is optimized so that departments within the organization, such as Financial, Human Resources and Sales, can accompany the evolution of their activity and take solid management decisions.

PRIMAVERA equipped Microsoft Excel with mechanisms which facilitate access to full ERP information, letting that information to be treated in a flexible manner and therefore oriented towards the acquirement of relevant knowledge.

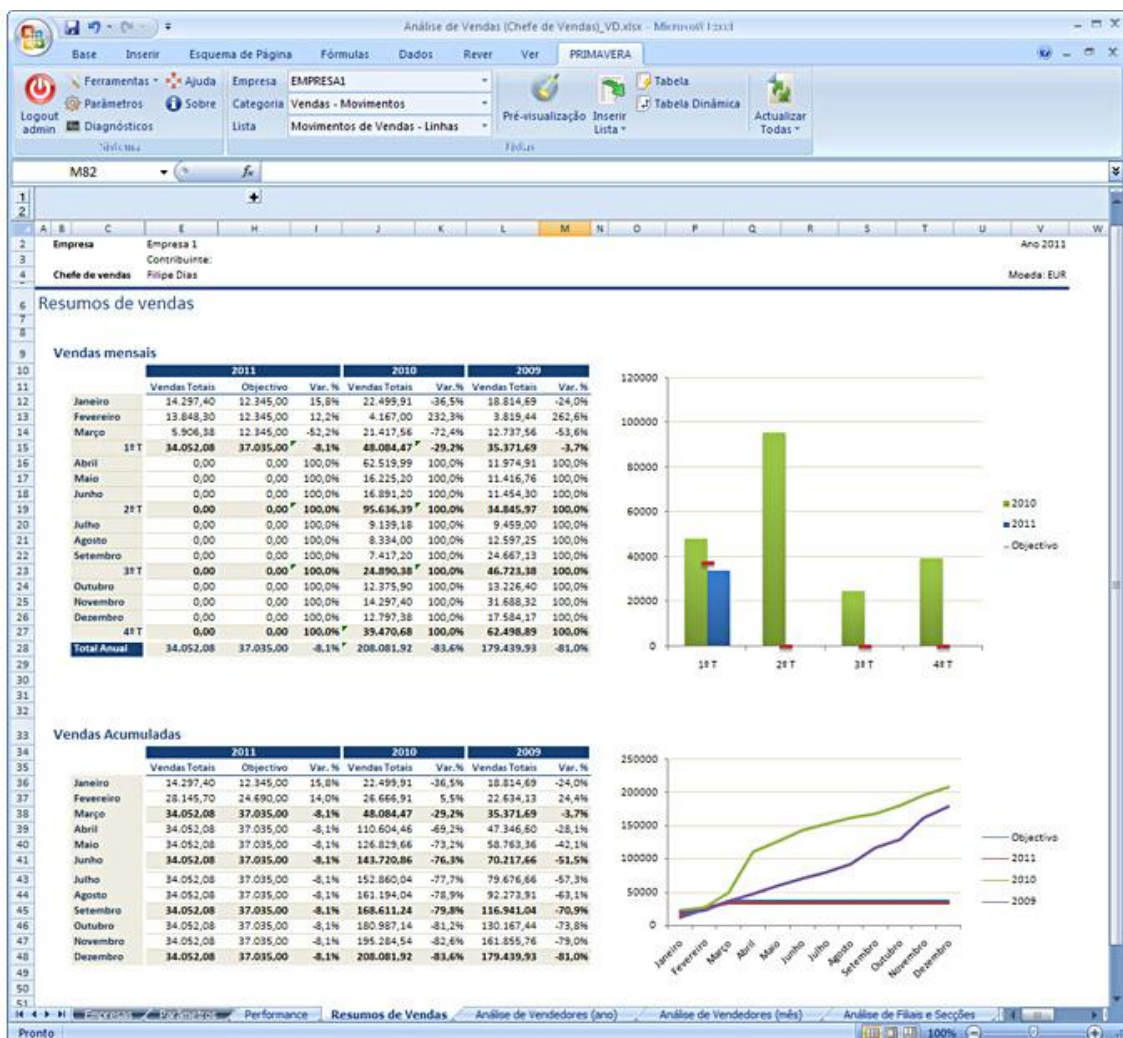
Let's discover the tool's main features. Thanks to its multi-company characteristics, it is ideal for Business Groups, as it allows for the selection of an entity and completes a comparative analysis for each stage, with the advantage of always working with updated databases.

One of the solution's pluses is the fact that it makes it easy to access and handle information held on ERP lists. Therefore, users can retrieve tailored lists from the ERP by selecting the company they wish to scrutinize and choosing the category that contains the preferred list. After this selection there are two options: choosing to preview the selected information or directly inserting it into a worksheet's normal or dynamic table, benefiting from the complete functionality of Excel's dynamic tables.

## XLS Sales

An important element of this solution is XLS Sales, a very useful tool for managing Sales teams, allowing differentiated and top management oriented analysis to be accessed by Sales Directors and the Sales Team itself.

Here are some examples of information which can be accessed by a Sales Director: sales analysis report, where the performance of each salesman or the whole team can be evaluated; sales summary (monthly or accumulated); salesman breakdown, per month or year; affiliate companies and sections overview; analysis of the most sold products per month or year (ABC categorization is possible) or client analysis (again, the ABC classification is available). Besides this group of predefined reports, users can also develop their own reports, by selecting their preferred criteria from the dynamic table.



The Sales Director can also provide the Sales Team with access to information on their individual activity, so they can permanently accompany the progression of their objectives' achievement, along with other overviews considered to be relevant.

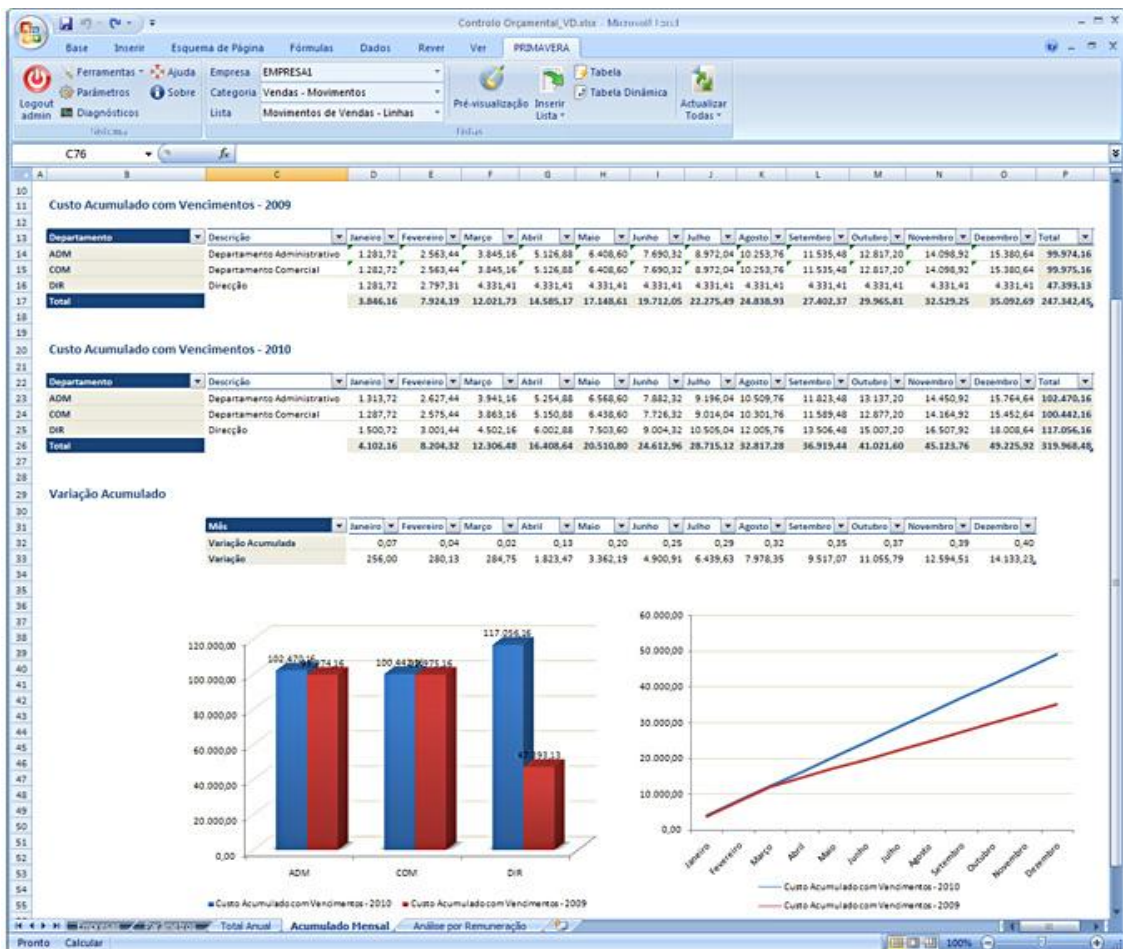
XLS Sales also allows Top Management to have business insight thanks to the help of a set of reports that evaluate the organization's global performance.

### XLS Human Resources

PRIMAVERA Office Extensions also includes an XLS for the Human Resources area.

Again, this application provides an array of reports that allow the analysis of information obtained from PRIMAVERA's ERP lists, providing a global vision of the company's Human Resources, organized per company, department or employee.

Let's take a look at some of the reports which, for example, a Human Resources Director can have access to.



Thanks to tools like Budget Control, it is possible to obtain monthly or yearly salary expenditures per company department or for the entire organization, and visualize details such as values spent on rewards, expenses, etc.

Management can also rigorously control staff data, including the admission and departure of employees, as well as employee's scheduled and unscheduled holiday calendars, always based on real-time information.

Besides reports that provide an analysis of absenteeism and overtime, this application also grants access to a Registry Analysis Report where the evolution of each employee's remuneration can be verified.

A large variety of statistics are also available, namely the distribution of employees per department, their age, gender, salary level, and education, along with other indicators considered as fundamental in Staff Management Processes.

### **XLS Financial**

The last module of this solution addresses the Financial segment, and it is an indispensable tool for Financial Directors and Controllers, as it promotes easy and swift access to their organization's accounting and financial information.

This application comprises more than 30 legal ready-to-use and updated analytical and performance management reports, allowing the prompt analysis of company data. These include, among others, Economic and Financial Annual Analysis Reports; Economical and Financial Monthly Analysis Reports; Calculation of Taxable Profits and Rendering of Accounts.

Taking as example the Economic and Financial Annual Analysis Reports, users can explore their company's accounting information according to: Costs, Profits, Results Demonstrations, Balance and Comparative Balances, Demonstration of Comparative Results and diverse ratios. Each one of these reports can be utilized in various ways. In what ratios are concerned, a group of financial, economic and performance indicators are included, providing top management with business critical input.

This application is equipped with formulas that were introduced in Excel and help users select from the ERP the exact information they wish to work with, according to their specific needs.

Análise Económica e Financeira Anual (SNC).xls [Modo de Compatibilidade] Microsoft Excel

Base Inserir Esquema de Página Fórmulas Dados Reverter Ver PRIMAVERA

Ferramentas Ajuda Empresa EMPRESAL Tabela  
 Parâmetros Sobre Categoria Vendas - Movimentos Pré-visualização Inserir Tabela Dinâmica  
 Logout admin Diagnósticos Lista Movimentos de Vendas - Linhas Atualizar Todas

B63

Empresa: EMPRESA1  
 Exercício: 2011 Moeda: EUR

Rácios

Rácios Financeiros

Rácio	Cálculo	Exercício	
		2011	2010
Autonomia financeira	Capital Próprio/Activo	38,05%	14,89%
Endividamento	Passivo/Activo	80,25%	84,72%
Solvabilidade	Capital Próprio/Passivo	47,42%	17,58%
Debt to Equity Ratio	Passivo/Capital Próprio	210,89%	568,92%
Estrutura do endividamento	Passivo corrente/Passivo	100,00%	100,00%
Cobertura do activo não corrente	(Capital Próprio + Passivo não corrente)/Activo não corrente	131,25%	57,73%
Fundo de Maneiro	Activo corrente - Passivo corrente	-1.230.332,31	-1.666.512,16
Fundo de Maneiro necessário		-2.316.852,40	-2.730.438,21
Tesouraria	Fundo de Maneiro - Fundo de maneiro necessário	1.086.520,09	1.063.926,05
Liquidez geral	Activo corrente/Passivo corrente	88,49%	87,59%
Liquidez reduzida		88,49%	87,59%
Liquidez imediata	Meios financeiros líquidos/Passivo corrente	10,17%	7,92%
Net Debt	Financiamentos obtidos - Caixa e depósitos Bancários	-1.086.520,09	-1.063.926,05

Rácios Económicos

Rácio	Cálculo	Exercício	
		2011	2010
EBITDA		10.642,61	-2.701.912,60
EBIT		10.642,61	-2.701.912,60
Margem de contribuição	Vendas e serviços prestados - (CMV-FSE)	8.441,78	6.313.404,44
Margem de contribuição (%)	Margem de contribuição /	177,50%	450,24%
Rendibilidade operacional	EBITDA / Vendas e serviços prestados	223,77%	-192,69%
Rendibilidade líquida das vendas	Resultado líquido do período /	25,17%	-193,22%
Valor acrescentado bruto (VAB)		1.070,18	-130.083,04
Custo líquido do financiamento	Gastos de financiamento -	-9.526,80	516,39

Rácios Económico-Financeiros

Rácio	Cálculo	Exercício	
		2011	2010
Rendibilidade bruta do activo	EBITDA / Activo (N-1)	0,07%	-
Rendibilidade líquida do activo	Resultado líquido do período / Activo (N-1)	0,01%	-
Rendibilidade do capital próprio	Resultado líquido do período /	0,05%	-
Rendibilidade do capital próprio	Resultado líquido do período /	-	-

Pronto Calcular

PRIMAVERA Office Extensions, For a Total Business Insight!



[WWW.PRIMAVERABSS.COM](http://WWW.PRIMAVERABSS.COM)